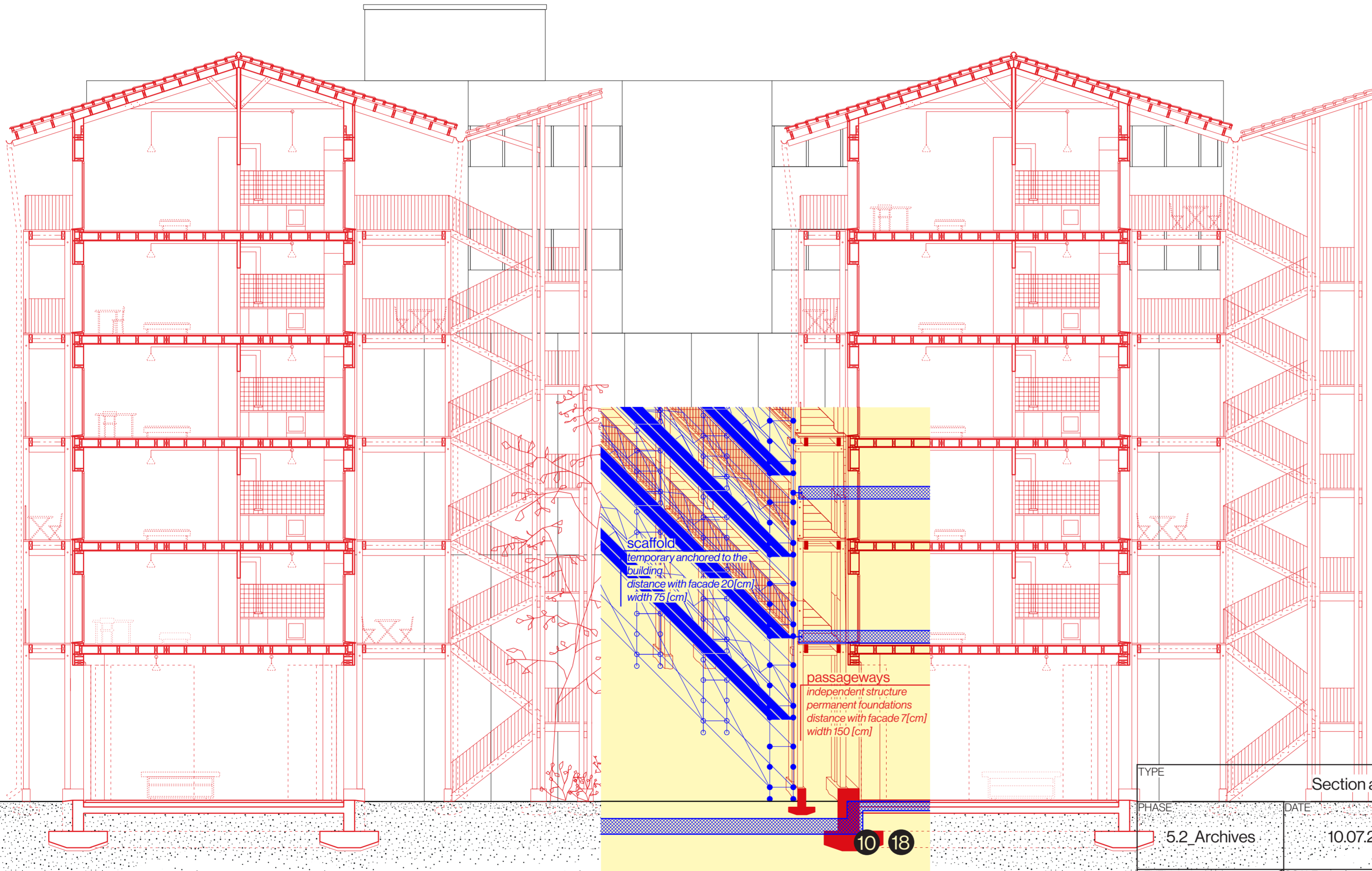


*All work is made possible thanks to the workers mentioned below

- .Masons
- .Crane driver
- .Scaffolders
- .Carpenter
- .Hemp concrete -
- .Spreaders
- .Joiner
- .Electricians
- .Plumbers
- .Heating Installers
- .Parquet Installers
- .Tilers
- .Plasterers
- .Painters
- .Cleaners
- .Architects
- .Engineers
- .Project Owner
- .& future workers.

TYPE		Section as built	
PHASE	DATE		
5.2 Archives	10.07.25		
LEVEL	SCALE		
	1/100		
LOCALISATION	TOLERANCE +		
Chemin du Viaduc 12 plot 994+875_1008 Prilly_Vaud, CH	15 cm		
COALITION			
Drill on Design - Amending SIA 102 : Toward a Labour Centered Architecture			



*All work is made possible thanks to the workers mentioned below

- .Masons
- .Crane driver
- .Scaffolders
- .Carpenter
- .Hemp concrete -
- .Spreaders
- .Joiner
- .Electricians
- .Plumbers
- .Heating Installers
- .Parquet Installers
- .Tilers
- .Plasterers
- .Painters
- .Cleaners
- .Architects
- .Engineers
- .Project Owner
- .& future workers.

TYPE		Section as built	
PHASE	DATE		
5.2 Archives	10.07.25		
LEVEL	SCALE		
	1/100		
LOCALISATION	TOLERANCE +		
Chemin du Viaduc 12 plot 994+875_1008 Prilly_Vaud, CH	15 cm		
COALITION			
Drill on Design - Amending SIA 102 : Toward a Labour Centered Architecture			